

Driving reminders

Ride a two-wheel moped on a carriage-way, cycle lane or cycle path. Three- and four-wheel mopeds must be driven on carriageways.

! Mopeds must not be ridden on the pavement or on cycle tracks and cycle and pedestrian tracks.



If you push a two-wheel moped by hand, you must move close to the right edge of the road and exit the carriageway, if possible. This way, you won't confuse oncoming vehicles as you are on the same side as the other vehicles.

When leaving the moped, take the helmet with you and avoid storing it in direct sunlight. If you leave the helmet on the seat, it may be stolen or damaged if it falls to the ground.



As a moped driver, you must hold the handlebars with both hands while driving, except when giving a warning signal with your hand, only then can the handlebars be held with one hand.

The technical condition of the moped must meet the manufacturer's requirements. Unauthorised modification of the vehicle is prohibited. When modifying the vehicle, you can also change the category required for driving it.



The slow vehicle symbol must be mounted on the back of a four-wheel moped (moped car) on its left edge or in the middle.

! Fully concentrate on driving!

Insurance and inspection

In order to register a moped, it must first be inspected by the Estonian Transport Administration to ascertain whether it meets the technical requirements.

As the moped is a vehicle, motor insurance is also mandatory in addition to registering the vehicle.

Mopeds are not subject to regular inspection.

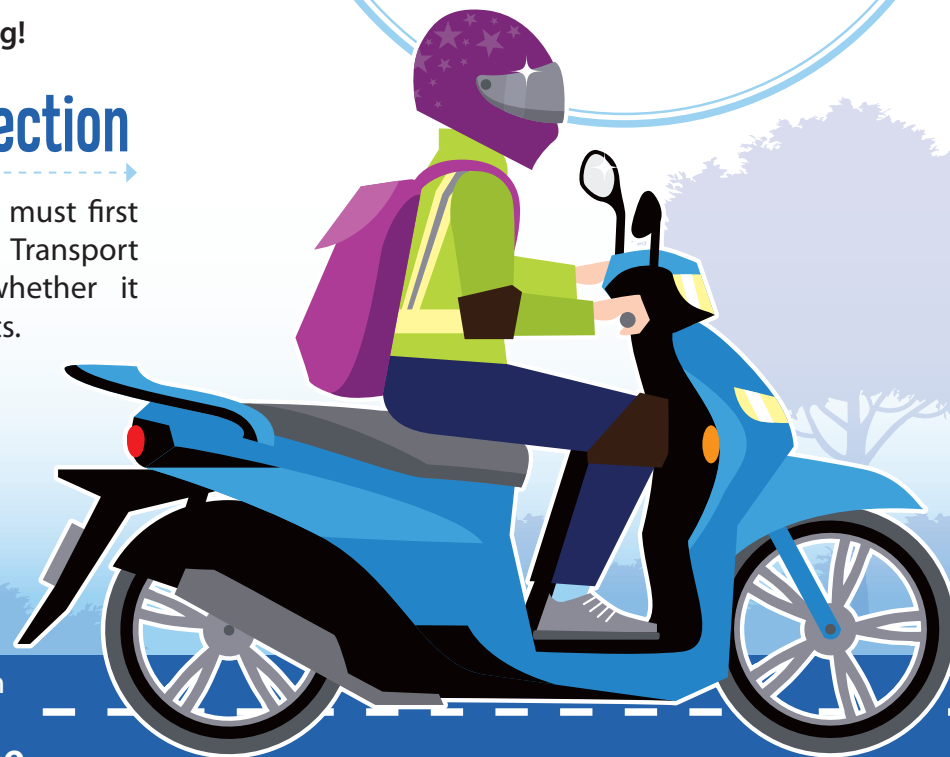
Additional information
can be found at:

liikluskasvatus.ee



TRANSPORDIAMET

FOR MOPED DRIVERS



Definitions in general

Moped means a two-wheel, three-wheel or four-wheel vehicle. The unladen mass of a moped does not exceed 425 kilograms and it has a design speed of no more than 45 km/h. The net power of the internal combustion engine or the continuous rated power of the electric motor must not exceed four kilowatts in the case of a two-wheel or three-wheel moped and six kilowatts in the case of a four-wheel moped. The capacity of the internal combustion engine of a two-wheel moped must not exceed 50 cubic centimetres. The capacity of the spark ignition internal combustion engine of a three-wheel or four-wheel moped must not exceed 50 cubic centimetres.

Right to drive

- ✓ A moped may be driven by a person who has the right to drive any motor vehicle or a limited right to drive. A person born prior to 1 January 1993 is not required to have the right to drive.
- ✓ The right to drive a moped (AM category) can be applied for from 14 years of age. An applicant for the right to drive a moped who is up to 15 years of age must have the written consent of their legal guardian for being granted the right to drive. To obtain the right to drive, you must complete a course at a driving school and successfully pass the theory and driving exams at the Estonian Transport Administration.
- ✓ The vehicle must not be handed over to a person without the appropriate right to drive.
- ✓ The fine for driving without the right to drive is up to €800.

Safety equipment

When driving a moped, sit in the space provided. Both as a driver and as a passenger, you must wear a strapped motorcycle helmet.

The motorcycle helmet must be correctly fastened and be suitable based on the circumference of your head to ensure maximum protection. When purchasing a helmet, make sure that it is CE marked. It is not worth buying a used helmet because over time it will lose its protective properties. When buying a used helmet, you may not understand whether the helmet is intact or whether it has fallen to the ground before.

As a moped driver, make yourself visible by wearing clothes (brightly coloured) which stand out from the background, a safety vest or reflective harnesses. Also wear proper knee and elbow pads and closed shoes.

These requirements do not apply to three- or four-wheel mopeds with closed bodywork fitted with safety belts and seats by the manufacturer. If the vehicle is equipped with seat belts, they must be fastened.

